

SLIK® SH-707AC

Operating Instructions

Thank you very much for choosing SLIK product. SLIK Corporation has designed a sturdy, rugged, dependable product that will provide you with many years of satisfactory use. Please take a few moments to read this operating instruction manual carefully before use to take full advantage of the many fine features. Retain this operating instruction manual in case you might want to refer back to it.

⚠ Caution

This caution icon refers to information pertaining to important safety procedures in preventing injuries, or damages which may occur as a result of mishandling this product.

🚫 Prohibition

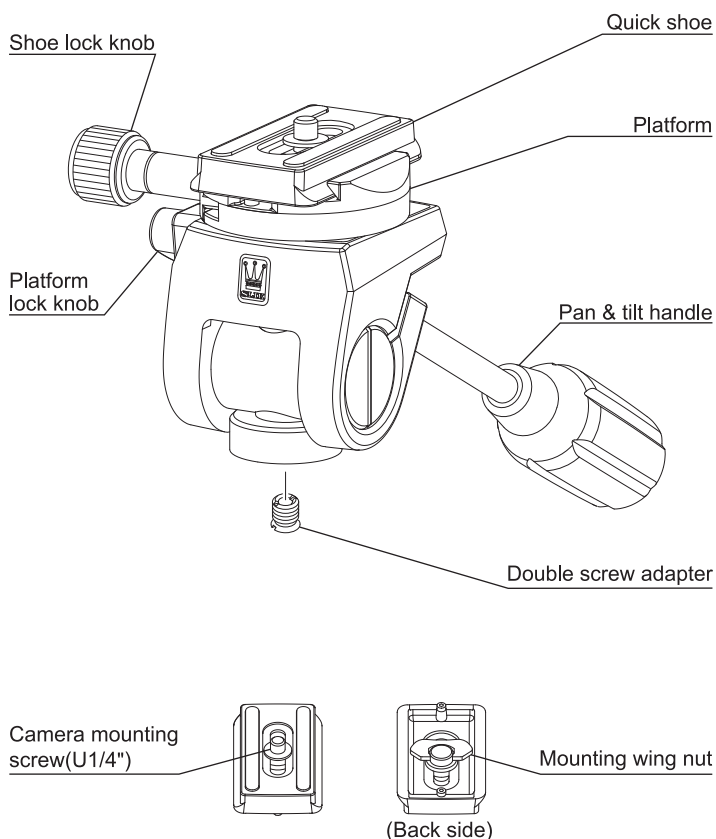
This prohibition icon refers to information pertaining to prohibited contents. Please refer to instruction closely to avoid accidents.

Specification

Height	85 mm (3.4 in)
Weight	470 g (1.04 lbs)
Camera mounting screw	U1/4"
Tripod mounting screw	U1/4" &/or U3/8"

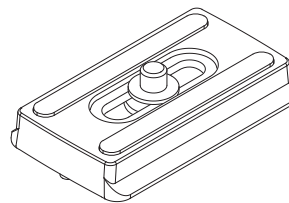
Y587

Components



Optional accessory

6507 Quick release shoe
Cat. No. 618-822



Equipment that can be loaded on this product

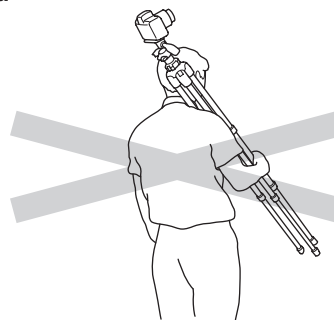
🚫 Prohibited

Maximum loading capacity
4 kgs (8.8 lbs)

Do not overload.
This product has been designed to handle equipment weighing under the maximum load capacity. Some equipment weighing under the maximum load capacity may not balance well due to its weight distribution. Use a larger monopod or head in such case.

Carrying the tripod

🚫 Prohibited

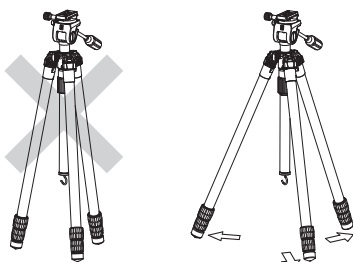


⚠ Caution

※Bubble level on the tripod is a rough criterion.
It's not so accurate as a level on a camera.

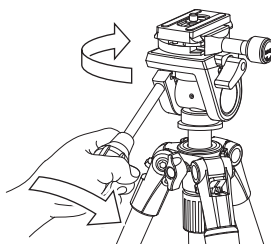
Setting up

⚠ Caution



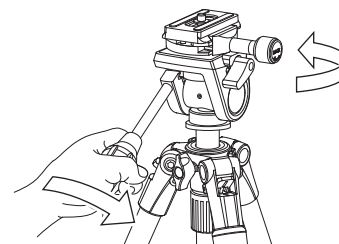
To prevent accidental equipment fall or tripod tipping over, make sure all levers, knobs and handles on the tripod are securely tightened. And all of the three legs are opened all the way.

Attaching the head to the center column



Use the following instructions if you wish to change heads or attach accessories.
Tighten the pan & tilt handle.
Grasp the pan & tilt handle and turn the head your counterclockwise to loosen.

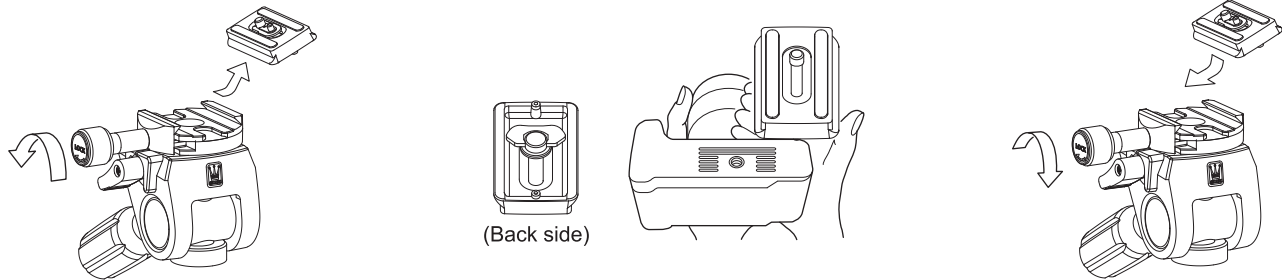
Removing the head from the center column



With your hands off the trigger, turn the head forcefully counterclockwise to loosen the head. Squeeze the grip & trigger and turn the head counterclockwise to remove the head.

Attaching the camera to the quick release shoe

⚠ Caution



To remove the quick release shoe, loosen the shoe lock knob until the quick release shoe can be removed from the platform.

Attach the quick release shoe mounting screw to the camera mount and secure firmly using the mounting wing nut.

Tighten the shoe lock knob firmly after inserting the quick release shoe to the platform. Please make sure the equipment is securely fixed to the pan head, before you use the pan head.

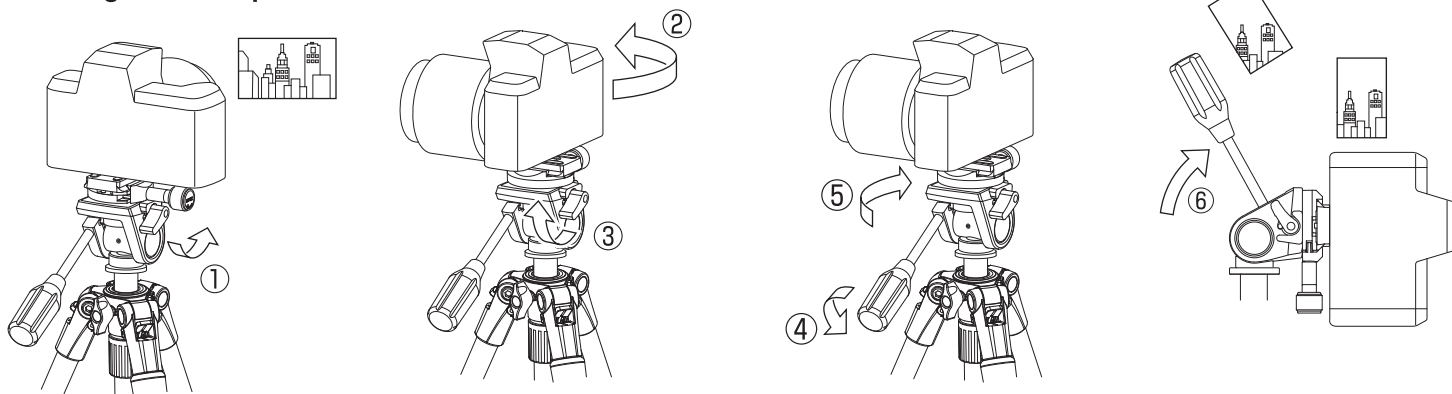
Using the pan head



When you unlock the handle, your camera is free to move up and down. When the pan & tilt handle is unlocked, you can pan & tilt simultaneously.

Turn the platform lock knob vertically frees the camera platform, allowing the camera to rotate 360 degrees.

How to get vertical position



1. Loosen camera platform locking knob.

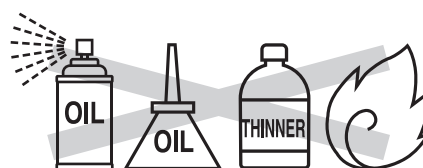
2. Turn your camera to the side.
3. Tighten camera platform locking knob.

4. Loosen pan & tilt handle for your camera to the front.
5. Turn the head 90 deg horizontally.

6. Adjust pan & tilt handle to get vertical position.

Care of the Tripod

- DO NOT apply any grease or oil to this product.
- Clean with a mild detergent and a soft cloth only.
- DO NOT use close to fire. Avoid extreme heat.



SLIK Corporation reserves the right to change designs and improvements without any obligation and advanced notice.

SLIK CORPORATION

853 Kayama, Hidaka City, Saitama 350-1231, Japan Phone 81-42-989-2141, Fax. 81-42-985-0210 ©2025

<https://slik.com/>